

The Croft



INFINITY GROUP

www.infinity.gg

The Croft - Site Plan



The Croft, La Grande Rue, St. Martin, GY4 6RX.



The Croft - Schedule page 1 of 2

UNIT NO.	UNIT TYPE	Gross Internal Floor Area (sq ft)	Amenity Area (est. sq ft)	BEDS	BATH / SHOWER	PARKING	PRICE	STATUS
1	House type 1	2,229	862	3	3 + 1 no. GF WC	2	£1,100,000	Available
2	House type 1	2,229	635	3	3 + 1 no. GF WC	2	£1,100,000	Available
3	House type 1	2,229	553	3	3 + 1 no. GF WC	2	£1,100,000	Available
4	House type 3	1,807	609	3	3 + 1 no. GF WC	2	£880,000	Available
5	House type 3	1,807	575	3	3 + 1 no. GF WC	2	£865,000	Available
6	House type 3	1,696	533	3	3 + 1 no. GF WC	2	£865,000	Available
7	House type 3	1,696	509	3	3 + 1 no. GF WC	2	£865,000	Available
8	House type 4	1,532	447	3	3 + 1 no. GF WC	2	£840,000	Sold
9	House type 4	1,532	406	3	3 + 1 no. GF WC	2	£840,000	Sold
10	House type 4	1,532	439	3	3 + 1 no. GF WC	2	£840,000	Sold
11	House type 4	1,532	660	3	3 + 1 no. GF WC	2	£850,000	Sold
12	House type 2	2,060	1259	3	3 + 1 no. GF WC	2	£995,000	Available
14	House type 2	2,060	616	3	3 + 1 no. GF WC	2	£995,000	Available

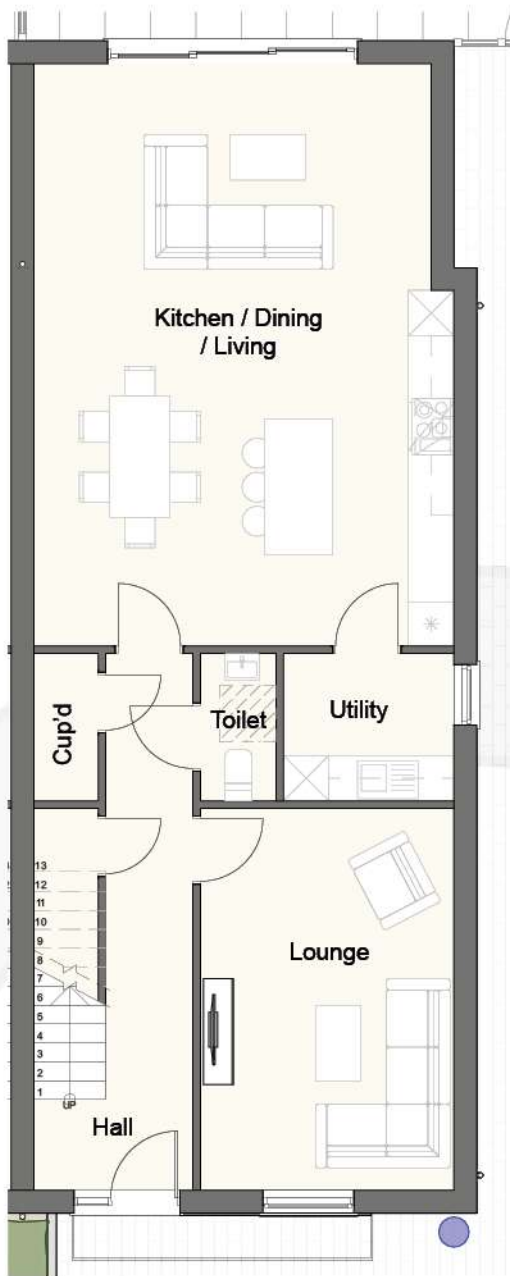
*For further details or viewings please contact our sales team.
01481 238878 or sales@infinity.gg.*

The Croft - Schedule page 2 of 2

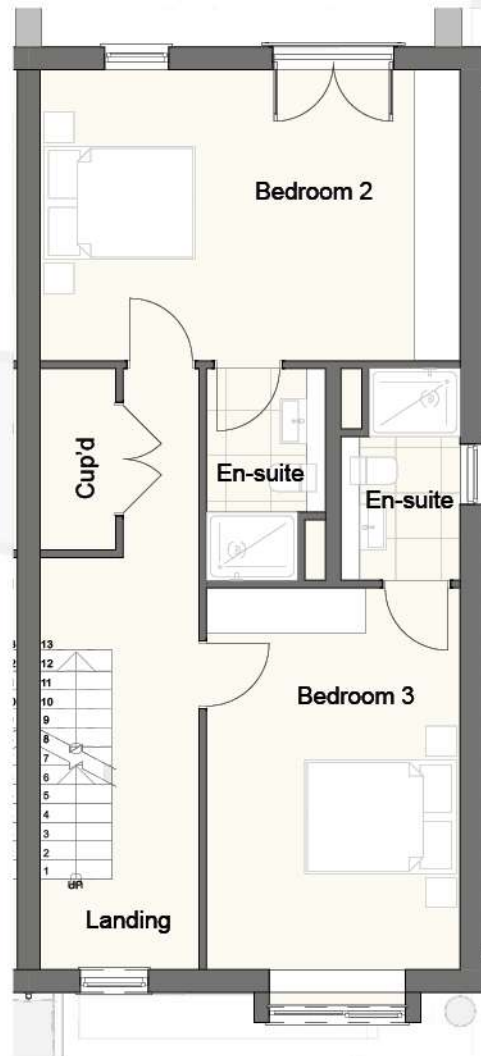
UNIT NO.	UNIT TYPE	Gross Internal Floor Area (sq ft)	Amenity Area (est. sq ft)	BEDS	BATH / SHOWER	PARKING	PRICE	STATUS
15	House type 2	2,060	649	3	3 + 1 no. GF WC	2	£995,000	Available
16	House type 2	2,060	582	3	3 + 1 no. GF WC	2	£995,000	Available
17	Apartment type 5	710	538	2	1	1	£555,000	Available
18	Apartment type 6	1101	153	2	2	1	£675,000	Available
19	Apartment type 5	710	493	2	1	1	£555,000	Available
20	Apartment type 6	1101	153	2	2	1	£675,000	Available
21	Apartment type 5	710	374	2	1	1	£555,000	Available
22	Apartment type 6	1101	153	2	2	1	£675,000	Available
23	Apartment type 7	720	471	2	1	1	£570,000	Available
24	Apartment type 8	1108	177	2	2	1	£675,000	Available
25	Apartment type 7	720	604	2	1	1	£570,000	Available
26	Apartment type 8	1108	153	2	2	1	£675,000	Available

*For further details or viewings please contact our sales team.
01481 238878 or sales@infinity.gg.*

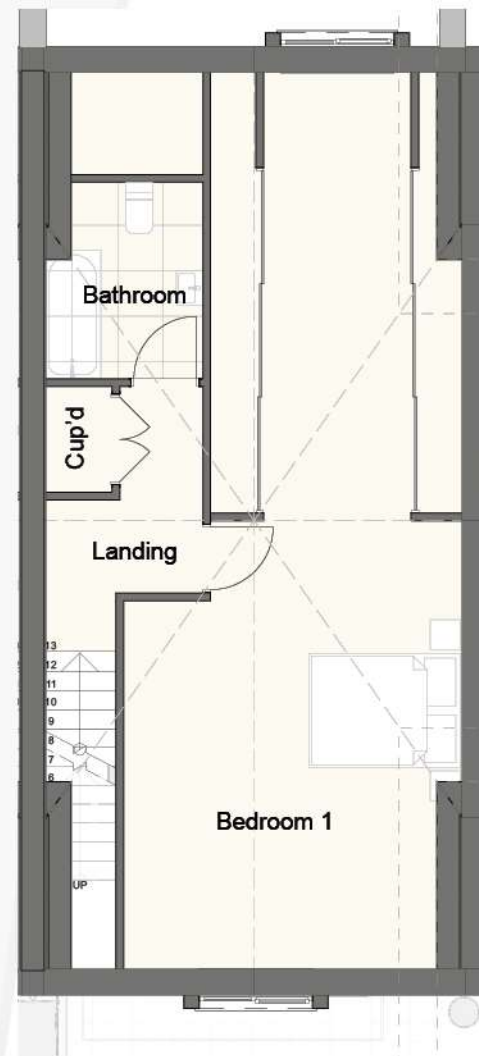
The Croft - Unit 1 - (House type 1)



Kitchen / Dining / Living	41.8 m ²
Cup'd	1.7 m ²
U/S Cup'd	1.4 m ²
Hallway	9.3 m ²
Toilet	1.9 m ²
Utility	4.4 m ²
Lounge	16.9 m ²



Bedroom 2	21.4 m ²
En-suite (Bed 2)	4.4 m ²
Cup'd	2.4 m ²
Bedroom 3	16.9 m ²
En-suite (Bed 3)	4.4 m ²
Landing	11.1 m ²



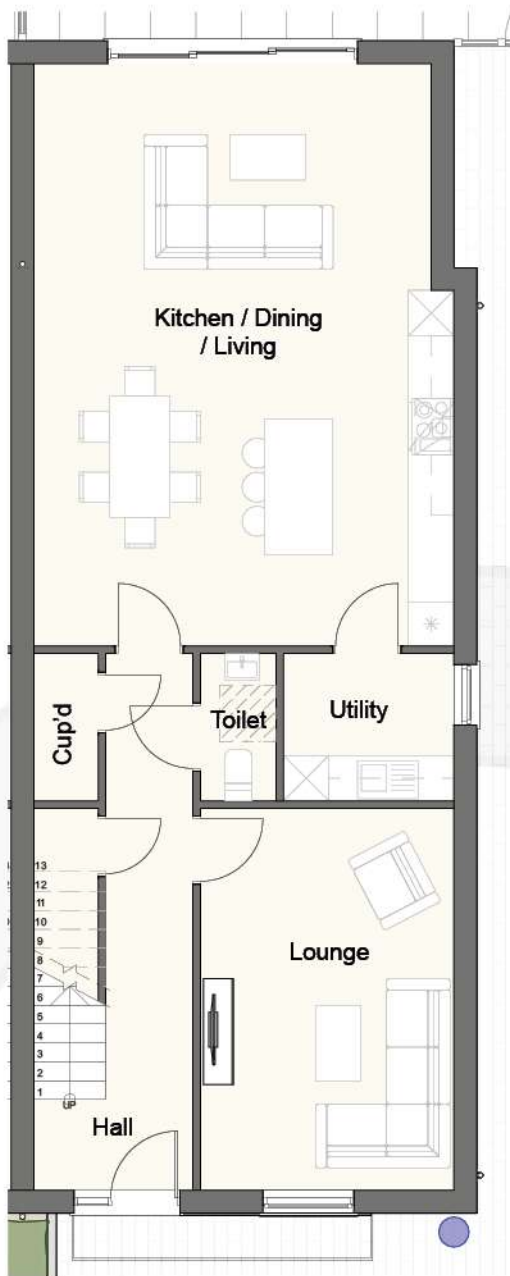
Bathroom	5.1 m ²
Cup'd	1.2 m ²
Landing	4.9 m ²
Bedroom 1	43.3 m ²

Total Floor area's

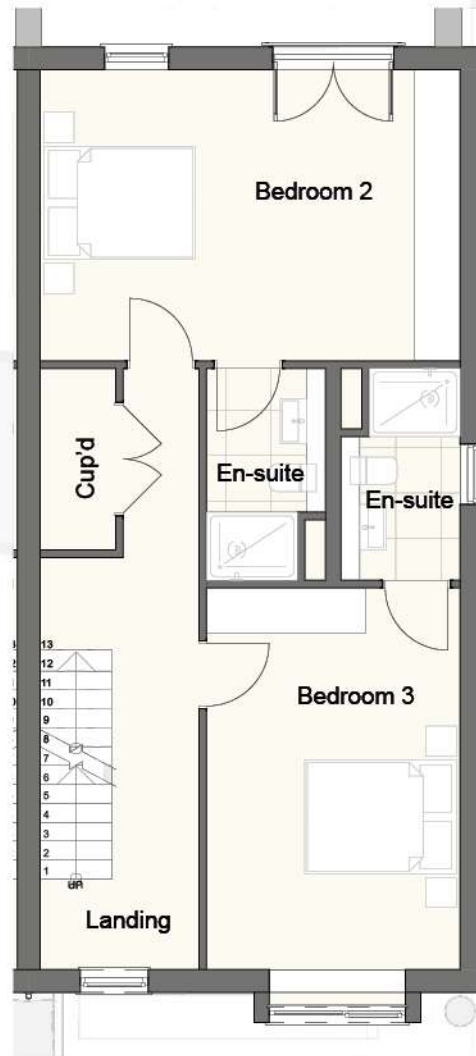
Ground floor	81.8 m ² 880 sq ft
First floor	66.1 m ² 711 sq ft
Second floor	59.2 m ² 637 sq ft
Total (GIA)	207.1 m² 2,229 sq ft

* Fitted wardrobes supplied in bedroom 1 only.
 ** Kitchens, wardrobes and general layouts are for guidance purposes only.

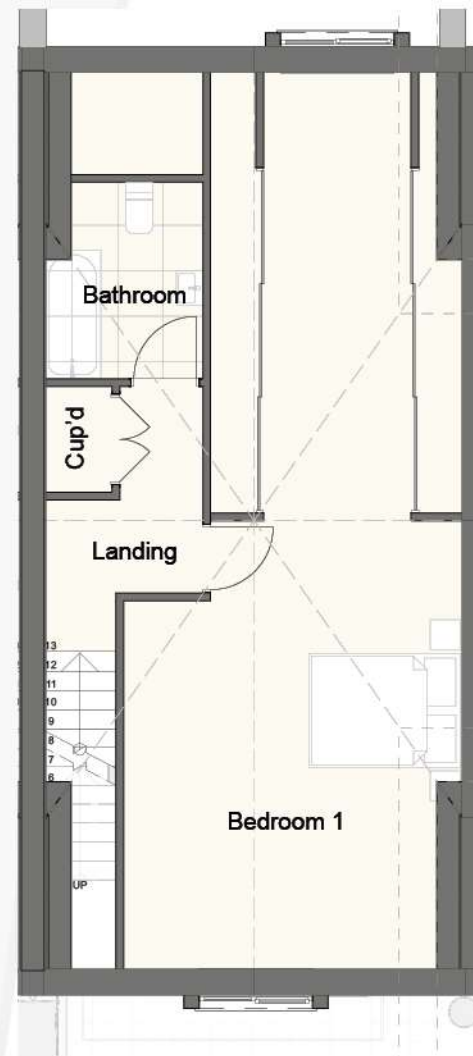
The Croft - Unit 2 - (House type 1)



Kitchen / Dining / Living	41.8 m ²
Cup'd	1.7 m ²
U/S Cup'd	1.4 m ²
Hallway	9.3 m ²
Toilet	1.9 m ²
Utility	4.4 m ²
Lounge	16.9 m ²



Bedroom 2	21.4 m ²
En-suite (Bed 2)	4.4 m ²
Cup'd	2.4 m ²
Bedroom 3	16.9 m ²
En-suite (Bed 3)	4.4 m ²
Landing	11.1 m ²



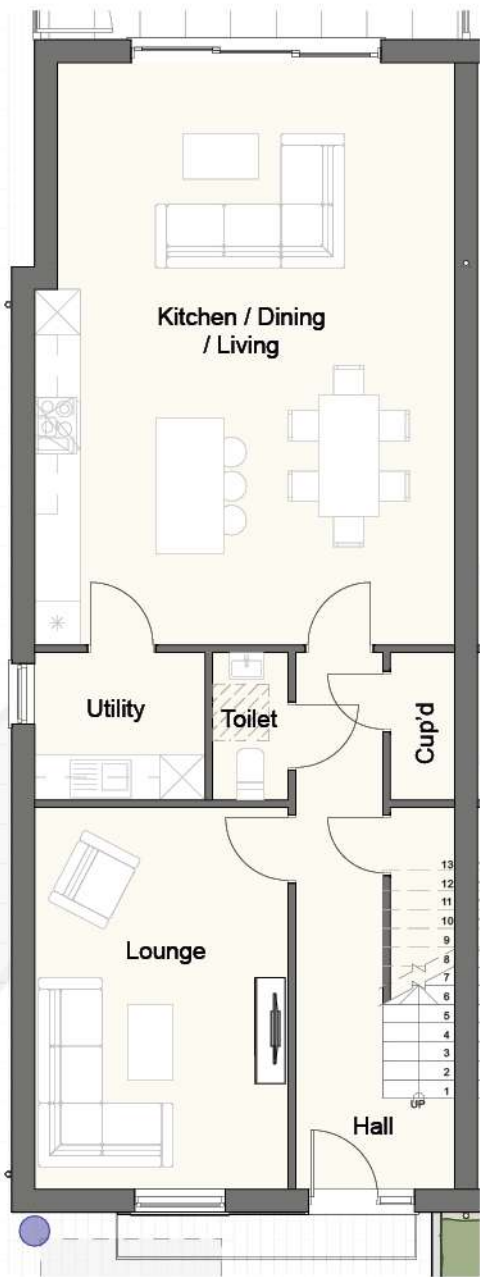
Bathroom	5.1 m ²
Cup'd	1.2 m ²
Landing	4.9 m ²
Bedroom 1	43.3 m ²

Total Floor area's

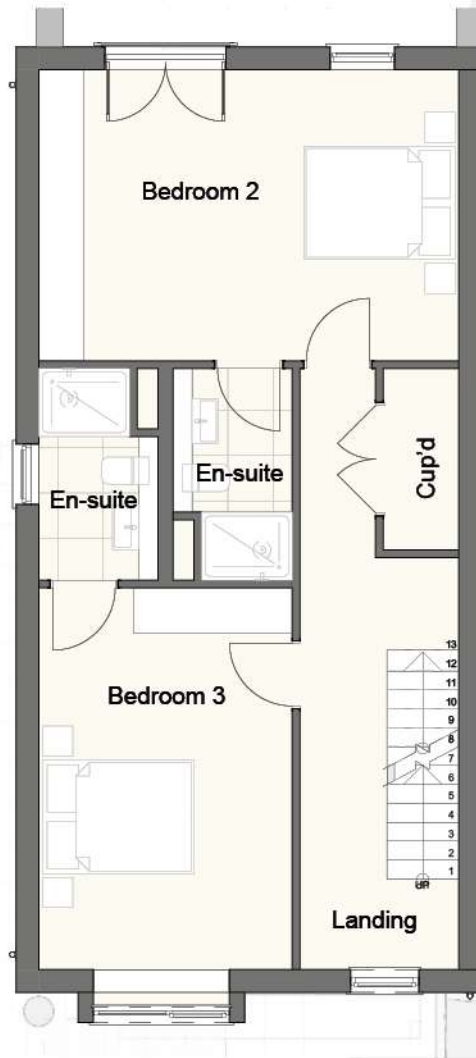
Ground floor	81.8 m ² 880 sq ft
First floor	66.1 m ² 711 sq ft
Second floor	59.2 m ² 637 sq ft
Total (GIA)	207.1 m ² 2,229 sq ft

* Fitted wardrobes supplied in bedroom 1 only.
 ** Kitchens, wardrobes and general layouts are for guidance purposes only.

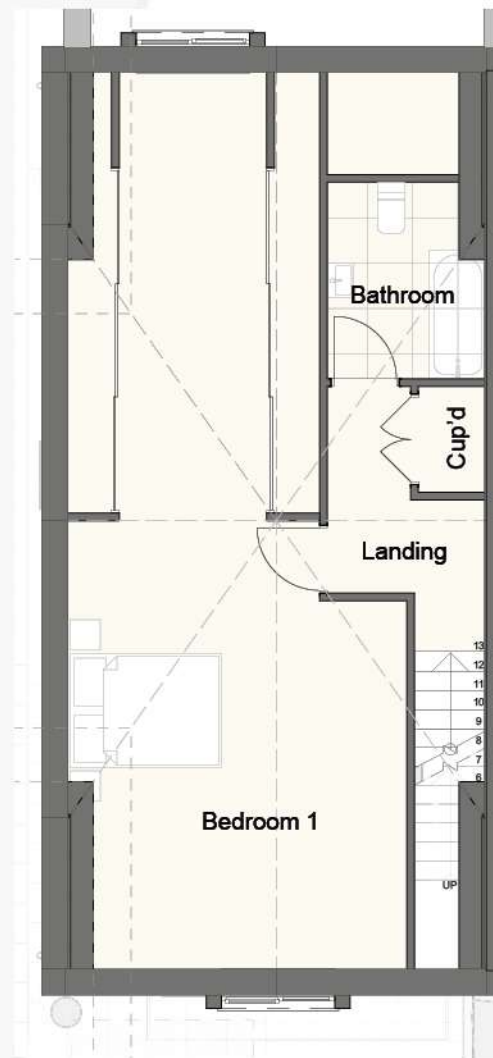
The Croft - Unit 3 - (House type 1)



Kitchen / Dining / Living	41.8 m ²
Cup'd	1.7 m ²
U/S Cup'd	1.4 m ²
Hallway	9.3 m ²
Toilet	1.9 m ²
Utility	4.4 m ²
Lounge	16.9 m ²



Bedroom 2	21.4 m ²
En-suite (Bed 2)	4.4 m ²
Cup'd	2.4 m ²
Bedroom 3	16.9 m ²
En-suite (Bed 3)	4.4 m ²
Landing	11.1 m ²



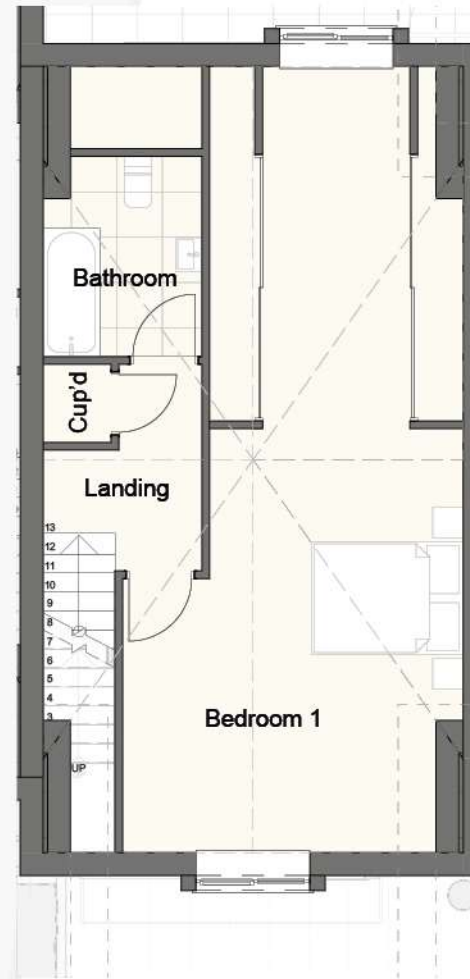
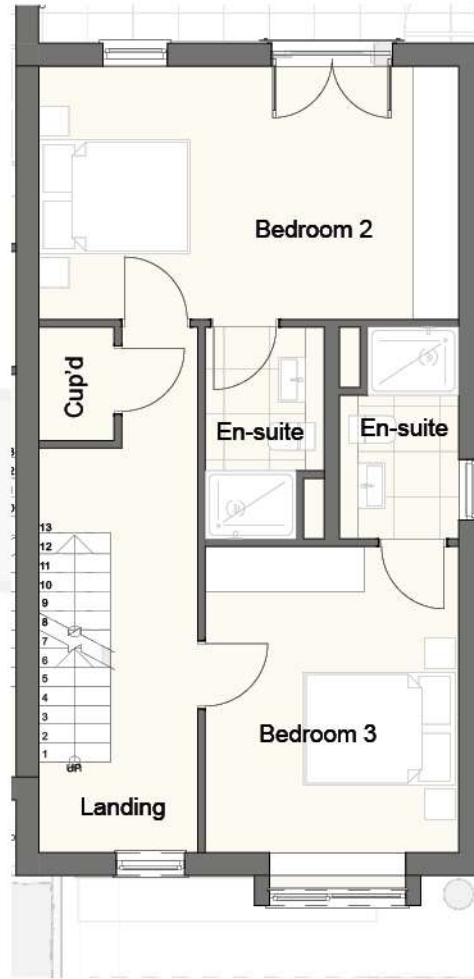
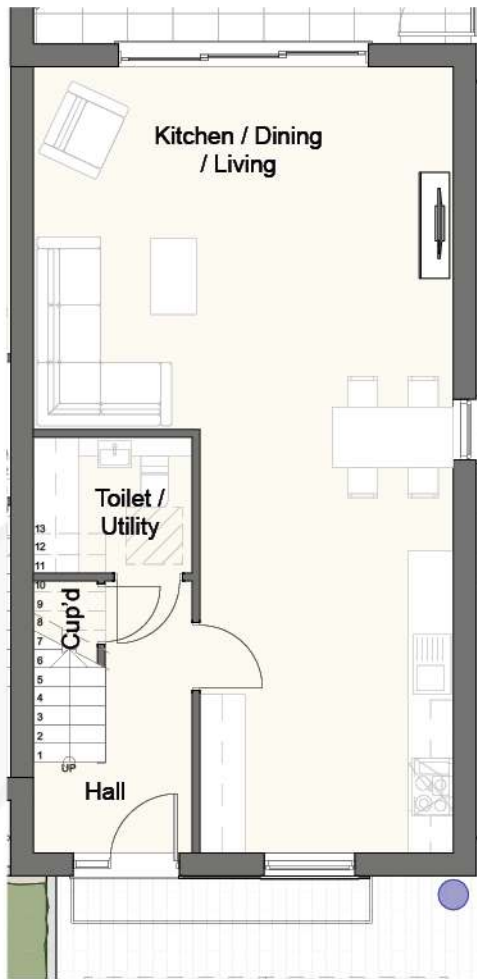
Bathroom	5.1 m ²
Cup'd	1.2 m ²
Landing	4.9 m ²
Bedroom 1	43.3 m ²

Total Floor area's

Ground floor	81.8 m ² 880 sq ft
First floor	66.1 m ² 711 sq ft
Second floor	59.2 m ² 637 sq ft
Total (GIA)	207.1 m ² 2,229 sq ft

* Fitted wardrobes supplied in bedroom 1 only.
 ** Kitchens, wardrobes and general layouts are for guidance purposes only.

The Croft - Unit 4 - (House type 3)



Total Floor area's

Ground floor	57.7 m ² 621 sq ft
First floor	57.7 m ² 621 sq ft
Second floor	52.5 m ² 565 sq ft
Total (GIA)	167.9 m² 1,807 sq ft

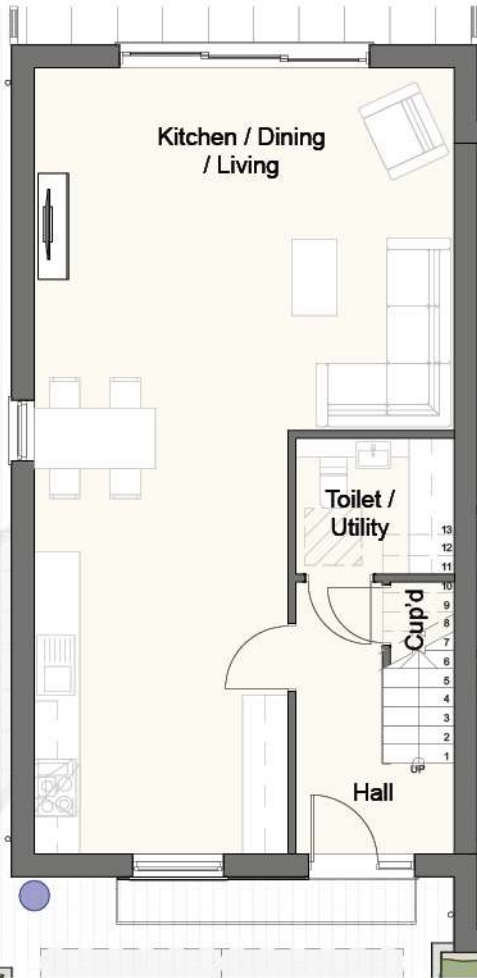
* Fitted wardrobes supplied in bedroom 1 only.
 ** Kitchens, wardrobes and general layouts are for guidance purposes only.

Kitchen / Dining / Living	45.4 m ²
U/S Cup'd	0.3 m ²
Hallway	5.3 m ²
Toilet / Utility	3.8 m ²

Bedroom 2	18.6 m ²
En-suite (Bed 2)	4.4 m ²
Cup'd	1.5 m ²
Bedroom 3	13.6 m ²
En-suite (Bed 3)	4.4 m ²
Landing	10 m ²

Bathroom	5.1 m ²
Cup'd	0.8 m ²
Landing	3.4 m ²
Bedroom 1	43.3 m ²

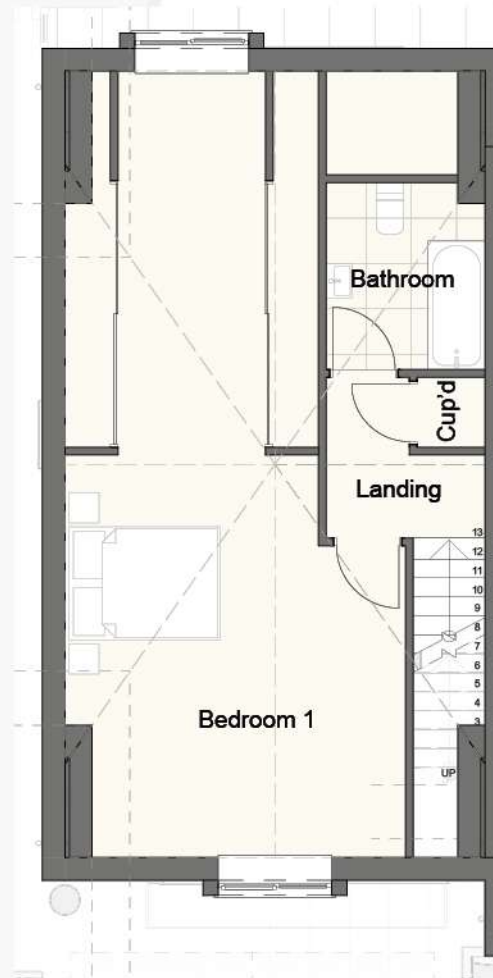
The Croft - Unit 5 - (House type 3)



Kitchen / Dining / Living	45.4 m ²
U/S Cup'd	0.3 m ²
Hallway	5.3 m ²
Toilet / Utility	3.8 m ²



Bedroom 2	18.6 m ²
En-suite (Bed 2)	4.4 m ²
Cup'd	1.5 m ²
Bedroom 3	13.6 m ²
En-suite (Bed 3)	4.4 m ²
Landing	10 m ²



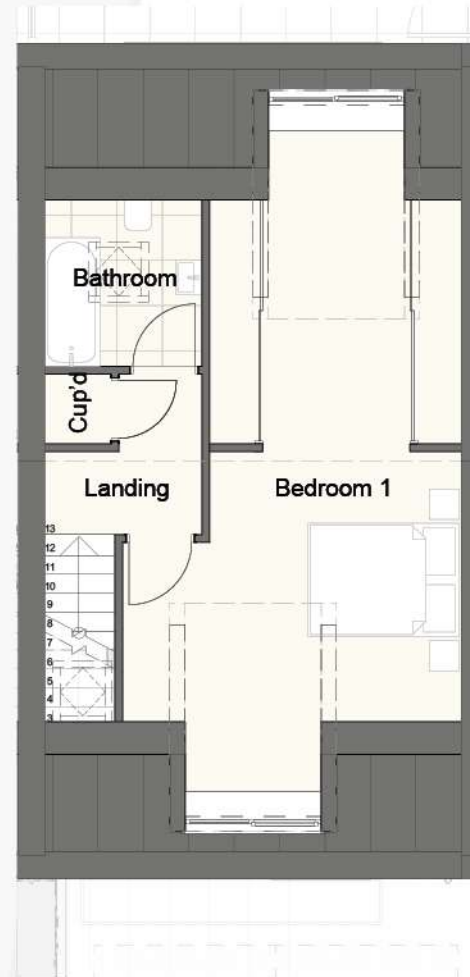
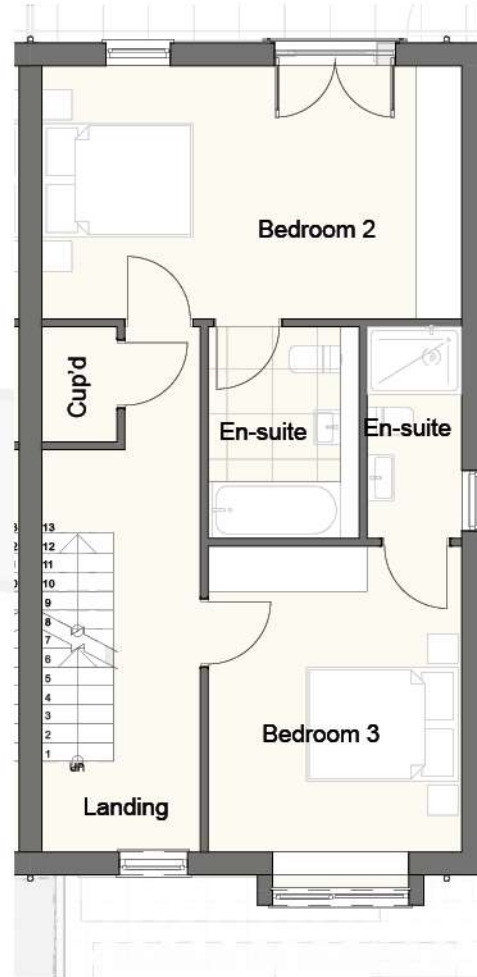
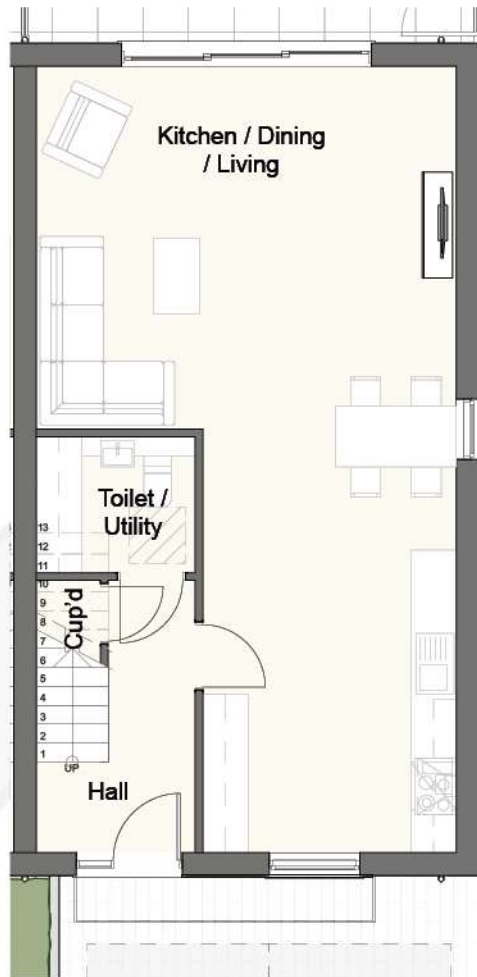
Bathroom	5.1 m ²
Cup'd	0.8 m ²
Landing	3.4 m ²
Bedroom 1	43.3 m ²

Total Floor area's

Ground floor	57.7 m ²	621 sq ft
First floor	57.7 m ²	621 sq ft
Second floor	52.5 m ²	565 sq ft
Total (GIA)	167.9 m²	1,807 sq ft

* Fitted wardrobes supplied in bedroom 1 only.
 ** Kitchens, wardrobes and general layouts are for guidance purposes only.

The Croft - Unit 6 - (House type 3)



Total Floor area's

Ground floor	57.7 m ² 621 sq ft
First floor	57.7 m ² 621 sq ft
Second floor	42.2 m ² 454 sq ft
Total (GIA)	157.6 m² 1,696 sq ft

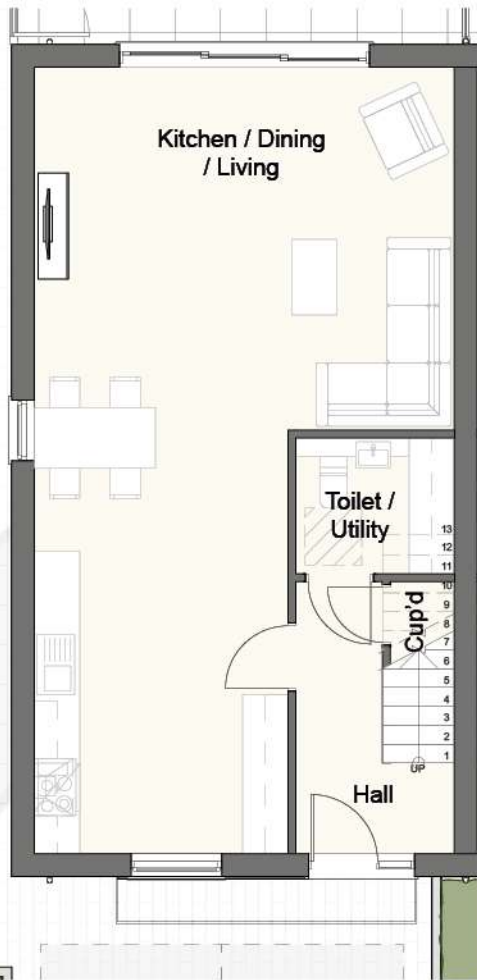
* Fitted wardrobes supplied in bedroom 1 only.
 ** Kitchens, wardrobes and general layouts are for guidance purposes only.

Kitchen / Dining / Living	45.4 m ²
U/S Cup'd	0.3 m ²
Hallway	5.3 m ²
Toilet / Utility	3.8 m ²

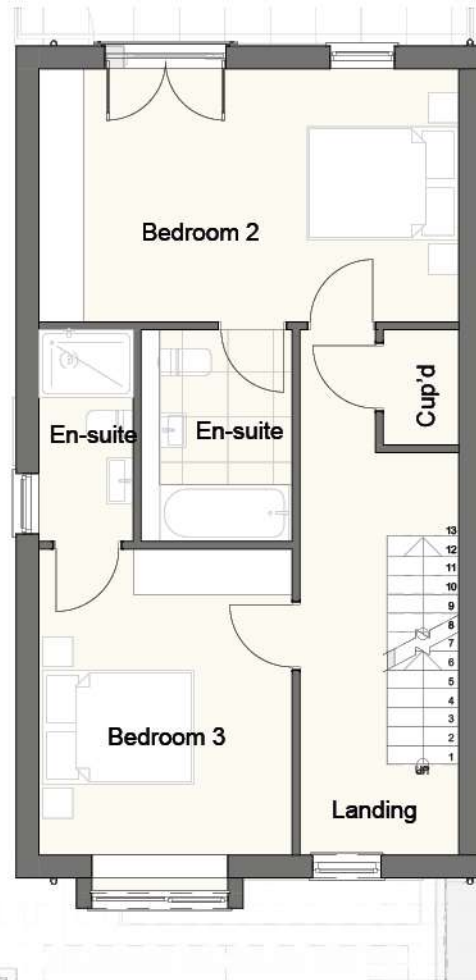
Bedroom 2	18.6 m ²
En-suite (Bed 2)	4.4 m ²
Cup'd	1.5 m ²
Bedroom 3	13.6 m ²
En-suite (Bed 3)	4.4 m ²
Landing	10 m ²

Bathroom	5.1 m ²
Cup'd	0.8 m ²
Landing	3.4 m ²
Bedroom 1	29.9 m ²

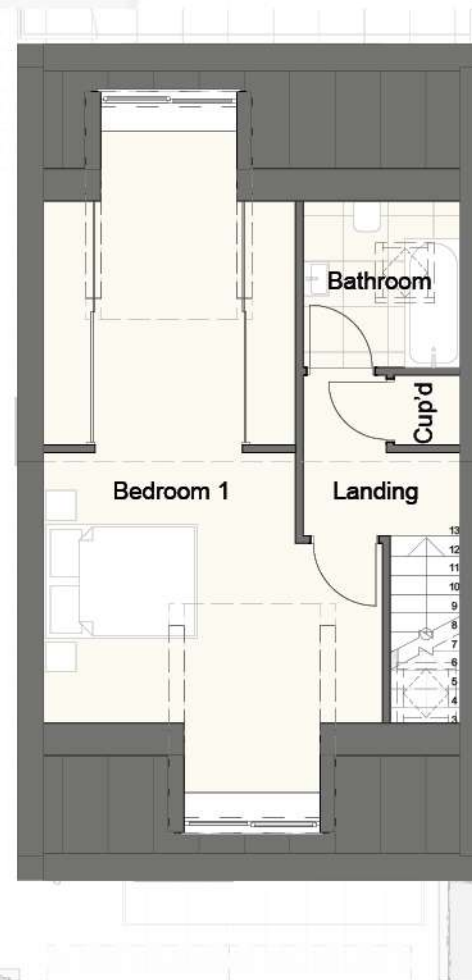
The Croft - Unit 7 - (House type 3)



Kitchen / Dining / Living	45.4 m ²
U/S Cup'd	0.3 m ²
Hallway	5.3 m ²
Toilet / Utility	3.8 m ²



Bedroom 2	18.6 m ²
En-suite (Bed 2)	4.4 m ²
Cup'd	1.5 m ²
Bedroom 3	13.6 m ²
En-suite (Bed 3)	4.4 m ²
Landing	10 m ²



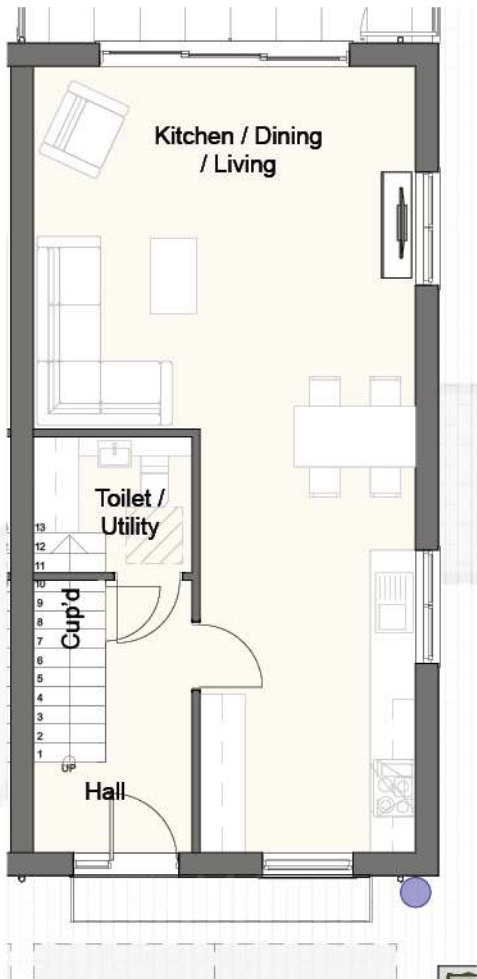
Bathroom	5.1 m ²
Cup'd	0.8 m ²
Landing	3.4 m ²
Bedroom 1	29.9 m ²

Total Floor area's

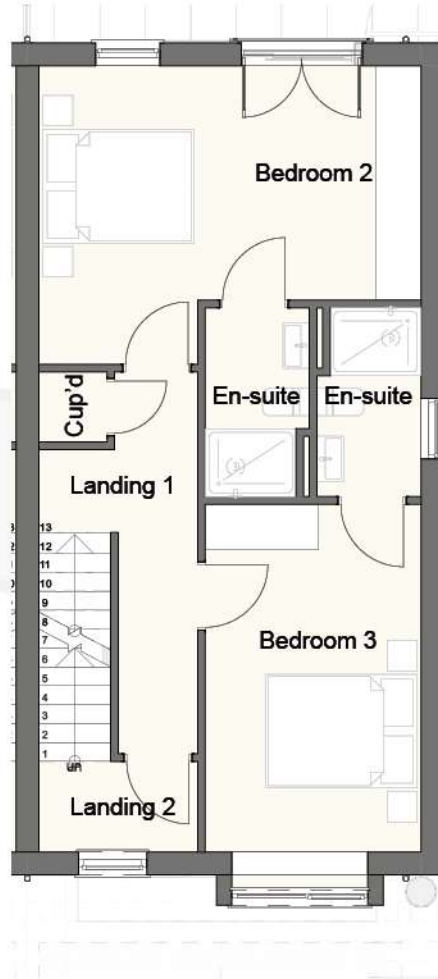
Ground floor	57.7 m ² 621 sq ft
First floor	57.7 m ² 621 sq ft
Second floor	42.2 m ² 454 sq ft
Total (GIA)	157.6 m² 1,696 sq ft

* Fitted wardrobes supplied in bedroom 1 only.
 ** Kitchens, wardrobes and general layouts are for guidance purposes only.

The Croft - Unit 8 - (House type 4)



Kitchen / Dining / Living	40.2 m ²
U/S Cup'd	0.3 m ²
Hallway	5.3 m ²
Toilet / Utility	3.8 m ²



Bedroom 2	17.4 m ²
En-suite (Bed 2)	3.4 m ²
Cup'd	0.8 m ²
Bedroom 3	13.1 m ²
En-suite (Bed 3)	3.4 m ²
Landing 1	6.5 m ²
Landing 2	2.5 m ²



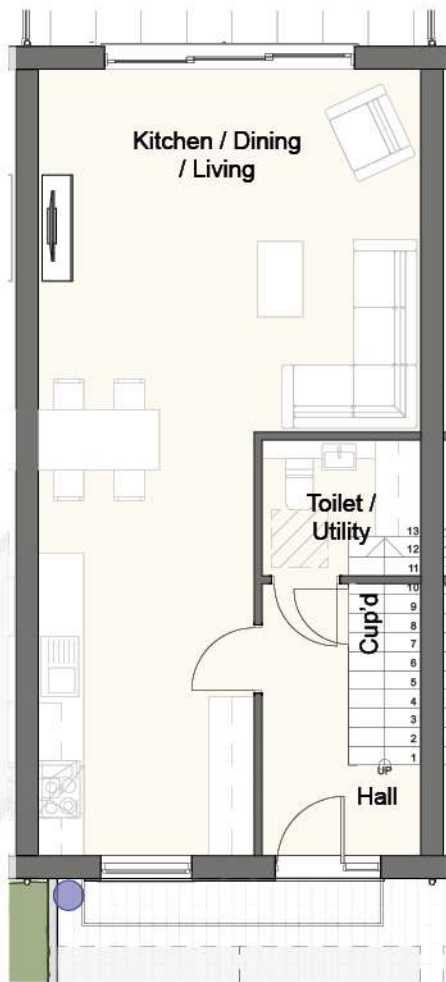
Bathroom	5.5 m ²
Bedroom 1	28.9 m ²

Total Floor area's

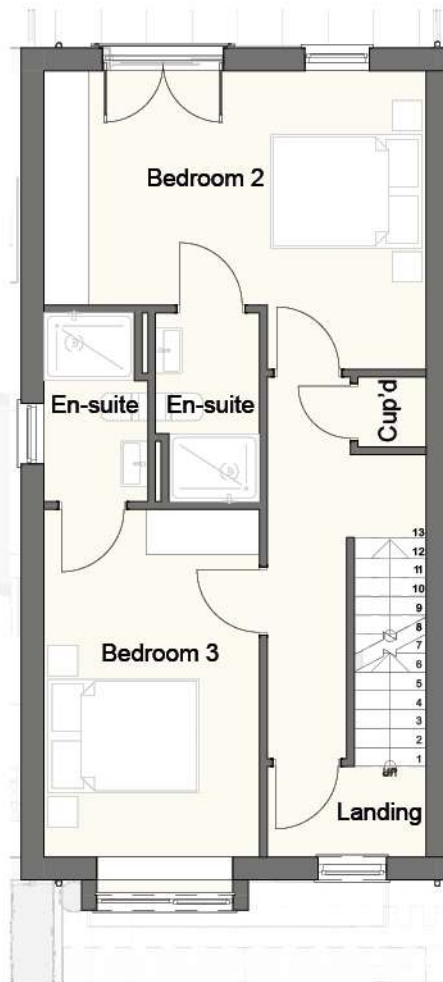
Ground floor	52.5 m ²
	565 sq ft
First floor	52.5 m ²
	565 sq ft
Second floor	37.3 m ²
	401 sq ft
Total (GIA)	142.3 m ²
	1532 sq ft

* Fitted wardrobes supplied in bedroom 1 only.
 ** Kitchens, wardrobes and general layouts are for guidance purposes only.

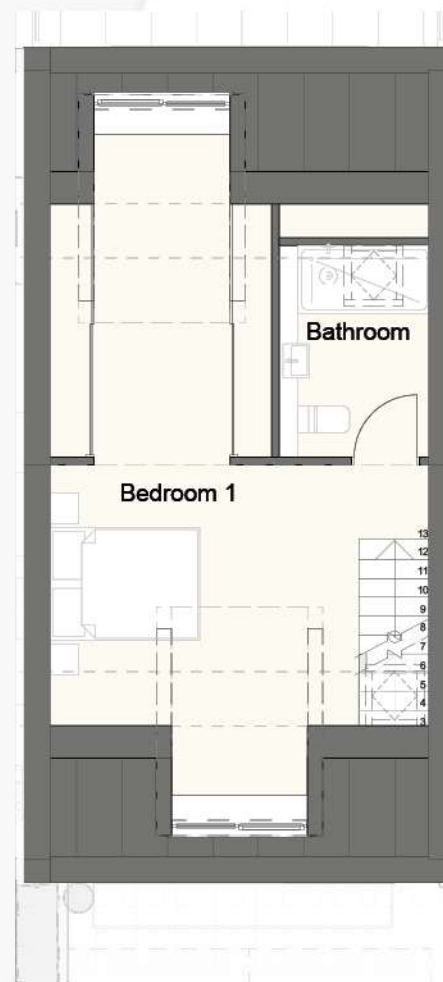
The Croft - Unit 9 - (House type 4)



Kitchen / Dining / Living	40.2 m ²
U/S Cup'd	0.3 m ²
Hallway	5.3 m ²
Toilet / Utility	3.8 m ²



Bedroom 2	17.4 m ²
En-suite (Bed 2)	3.4 m ²
Cup'd	0.8 m ²
Bedroom 3	13.1 m ²
En-suite (Bed 3)	3.4 m ²
Landing 1	6.5 m ²
Landing 2	2.5 m ²



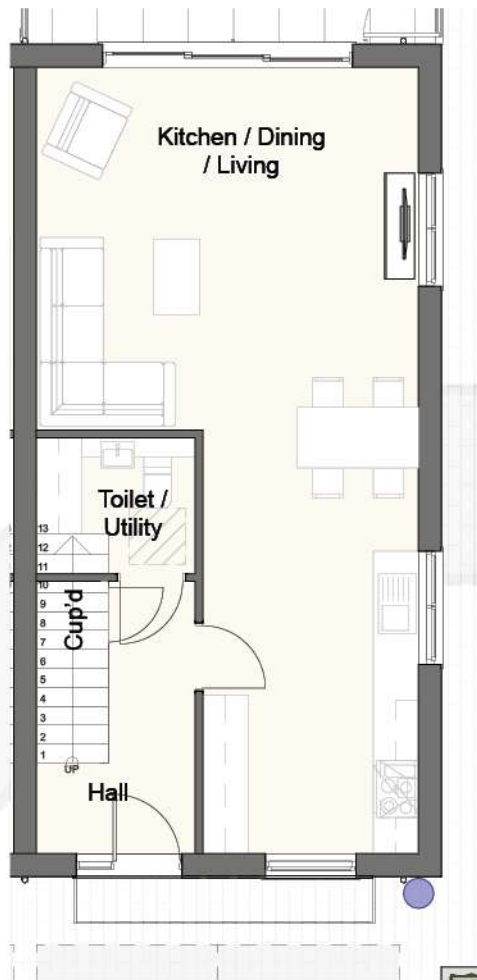
Bathroom	5.5 m ²
Bedroom 1	28.9 m ²

Total Floor area's

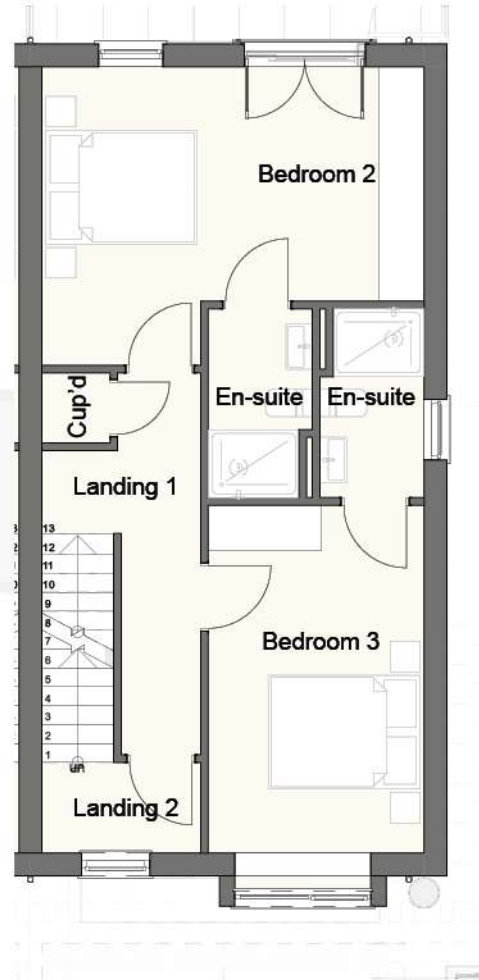
Ground floor	52.5 m ² 565 sq ft
First floor	52.5 m ² 565 sq ft
Second floor	37.3 m ² 401 sq ft
Total (GIA)	142.3 m² 1532 sq ft

* Fitted wardrobes supplied in bedroom 1 only.
 ** Kitchens, wardrobes and general layouts are for guidance purposes only.

The Croft - Unit 10 - (House type 4)



Kitchen / Dining / Living	40.2 m ²
U/S Cup'd	0.3 m ²
Hallway	5.3 m ²
Toilet / Utility	3.8 m ²



Bedroom 2	17.4 m ²
En-suite (Bed 2)	3.4 m ²
Cup'd	0.8 m ²
Bedroom 3	13.1 m ²
En-suite (Bed 3)	3.4 m ²
Landing 1	6.5 m ²
Landing 2	2.5 m ²



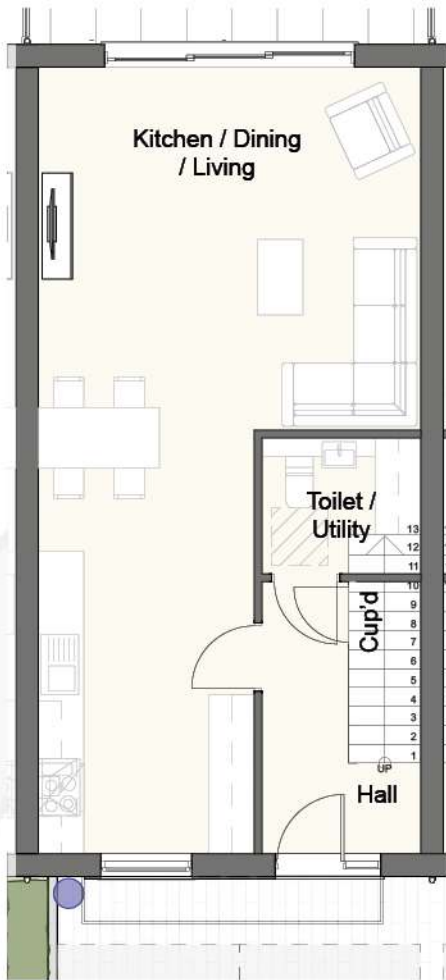
Bathroom	5.5 m ²
Bedroom 1	28.9 m ²

Total Floor area's

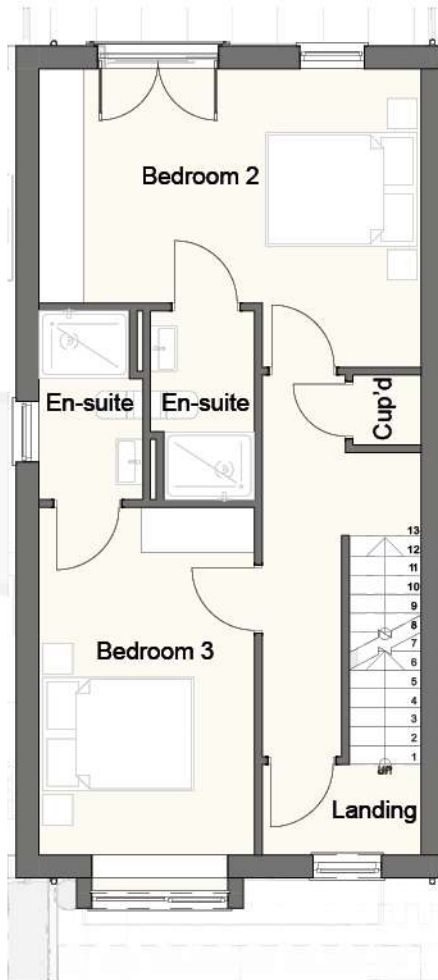
Ground floor	52.5 m ²
	565 sq ft
First floor	52.5 m ²
	565 sq ft
Second floor	37.3 m ²
	401 sq ft
Total (GIA)	142.3 m ²
	1532 sq ft

* Fitted wardrobes supplied in bedroom 1 only.
 ** Kitchens, wardrobes and general layouts are for guidance purposes only.

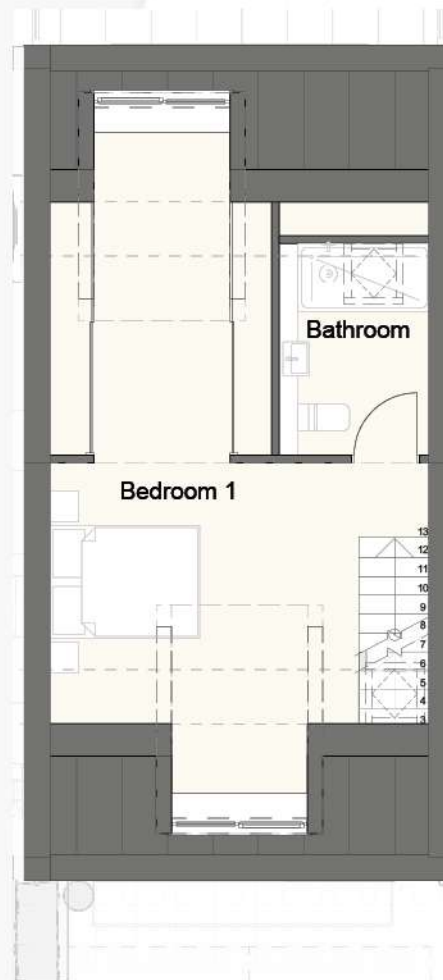
The Croft - Unit 11 - (House type 4)



Kitchen / Dining / Living	40.2 m ²
U/S Cup'd	0.3 m ²
Hallway	5.3 m ²
Toilet / Utility	3.8 m ²



Bedroom 2	17.4 m ²
En-suite (Bed 2)	3.4 m ²
Cup'd	0.8 m ²
Bedroom 3	13.1 m ²
En-suite (Bed 3)	3.4 m ²
Landing 1	6.5 m ²
Landing 2	2.5 m ²



Bathroom	5.5 m ²
Bedroom 1	28.9 m ²

Total Floor area's

Ground floor	52.5 m ²
	565 sq ft
First floor	52.5 m ²
	565 sq ft
Second floor	37.3 m ²
	401 sq ft
Total (GIA)	142.3 m²
	1532 sq ft

* Fitted wardrobes supplied in bedroom 1 only.
 ** Kitchens, wardrobes and general layouts are for guidance purposes only.

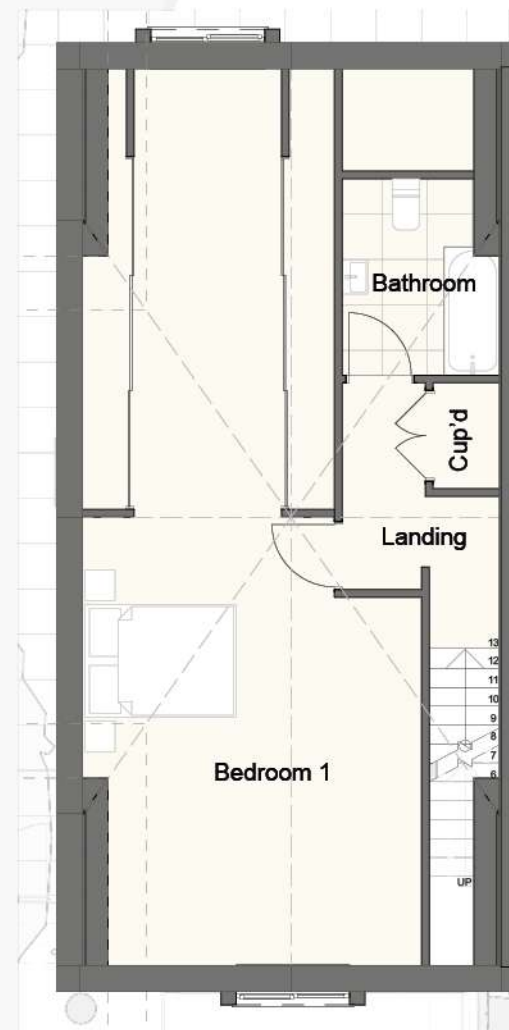
The Croft - Unit 12 - (House type 2)



Kitchen / Dining	26.1 m ²
Utility	4.4 m ²
Toilet	1.9 m ²
Cup'd	1.7 m ²
U/S Cup'd	1.6 m ²
Hallway	9.3 m ²
Lounge	16.9 m ²



Bedroom 2	21.4 m ²
En-suite (Bed 2)	4.4 m ²
Cup'd	2.4 m ²
Bedroom 3	16.9 m ²
En-suite (Bed 3)	4.4 m ²
Landing	11.1 m ²



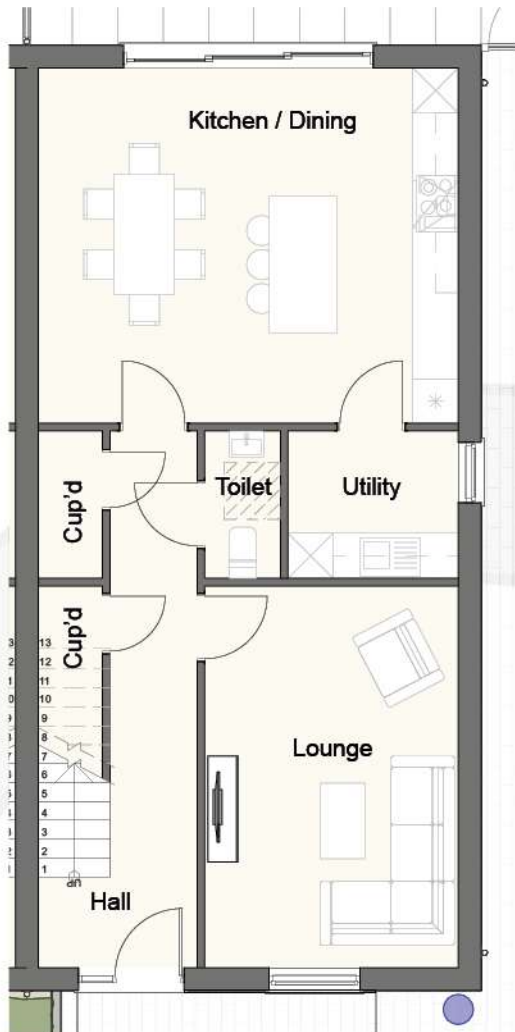
Bathroom	5.1 m ²
Cup'd	1.3 m ²
Bedroom 1	43.3 m ²
Landing	4.9 m ²

Total Floor area's

Ground floor	66 m ² 710 sq ft
First floor	66 m ² 710 sq ft
Second floor	59.4 m ² 639 sq ft
Total (GIA)	191.4 m ² 2060 sq ft

* Fitted wardrobes supplied in bedroom 1 only.
 ** Kitchens, wardrobes and general layouts are for guidance purposes only.

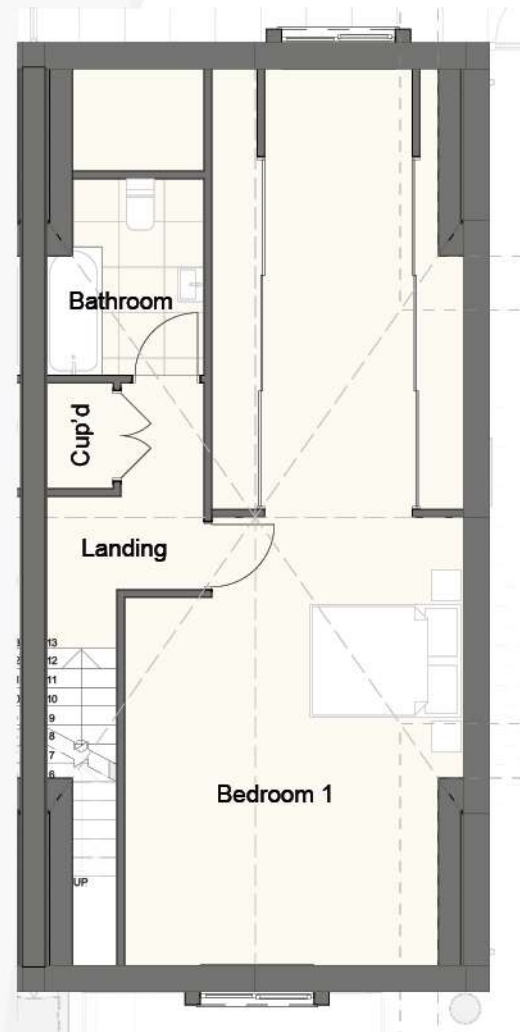
The Croft - Unit 14 - (House type 2)



Kitchen / Dining	26.1 m ²
Utility	4.4 m ²
Toilet	1.9 m ²
Cup'd	1.7 m ²
U/S Cup'd	1.6 m ²
Hallway	9.3 m ²
Lounge	16.9 m ²



Bedroom 2	21.4 m ²
En-suite (Bed 2)	4.4 m ²
Cup'd	2.4 m ²
Bedroom 3	16.9 m ²
En-suite (Bed 3)	4.4 m ²
Landing	11.1 m ²



Bathroom	5.1 m ²
Cup'd	1.3 m ²
Bedroom 1	43.3 m ²
Landing	4.9 m ²

Total Floor area's

Ground floor	66 m ²	710 sq ft
First floor	66 m ²	710 sq ft
Second floor	59.4 m ²	639 sq ft
Total (GIA)	191.4 m²	2060 sq ft

* Fitted wardrobes supplied in bedroom 1 only.
 ** Kitchens, wardrobes and general layouts are for guidance purposes only.

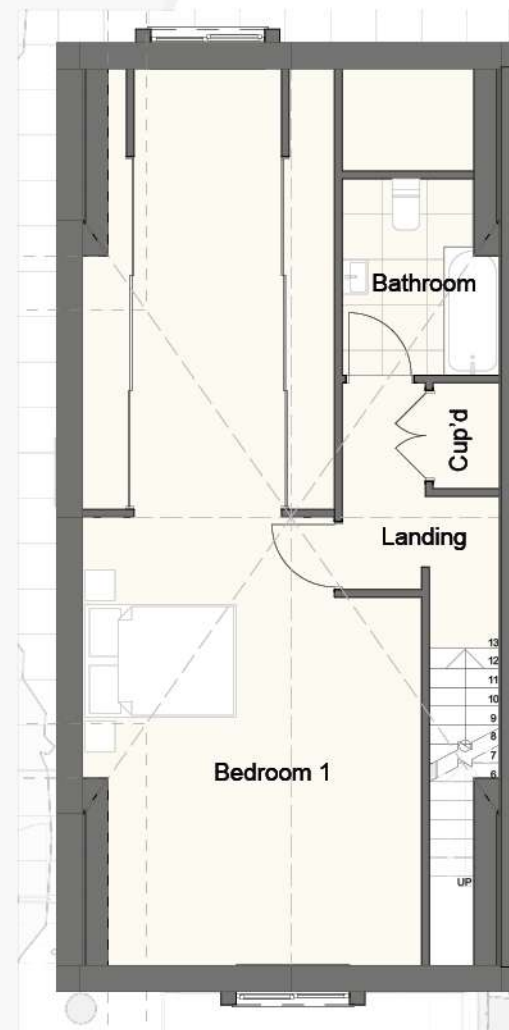
The Croft - Unit 15 - (House type 2)



Kitchen / Dining	26.1 m ²
Utility	4.4 m ²
Toilet	1.9 m ²
Cup'd	1.7 m ²
U/S Cup'd	1.6 m ²
Hallway	9.3 m ²
Lounge	16.9 m ²



Bedroom 2	21.4 m ²
En-suite (Bed 2)	4.4 m ²
Cup'd	2.4 m ²
Bedroom 3	16.9 m ²
En-suite (Bed 3)	4.4 m ²
Landing	11.1 m ²



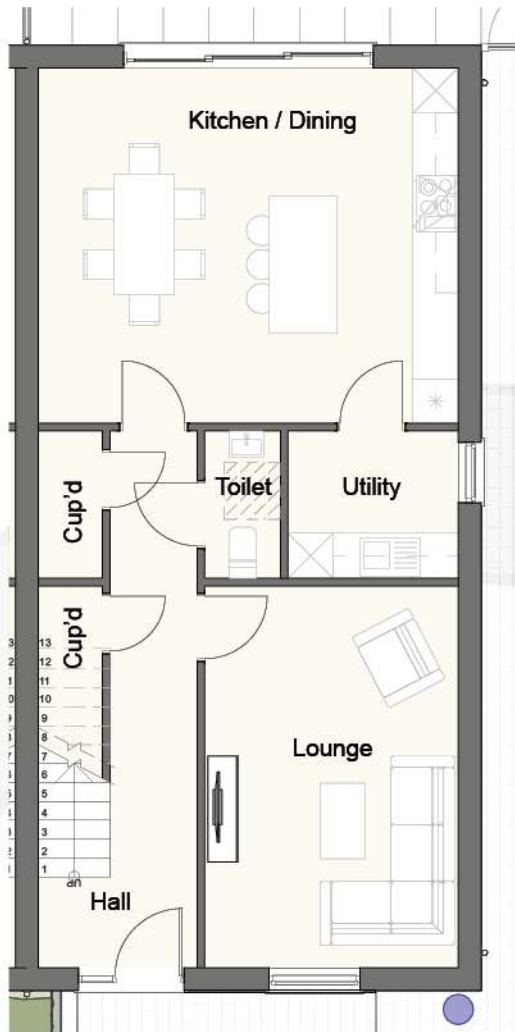
Bathroom	5.1 m ²
Cup'd	1.3 m ²
Bedroom 1	43.3 m ²
Landing	4.9 m ²

Total Floor area's

Ground floor	66 m ² 710 sq ft
First floor	66 m ² 710 sq ft
Second floor	59.4 m ² 639 sq ft
Total (GIA)	191.4 m ² 2060 sq ft

* Fitted wardrobes supplied in bedroom 1 only.
 ** Kitchens, wardrobes and general layouts are for guidance purposes only.

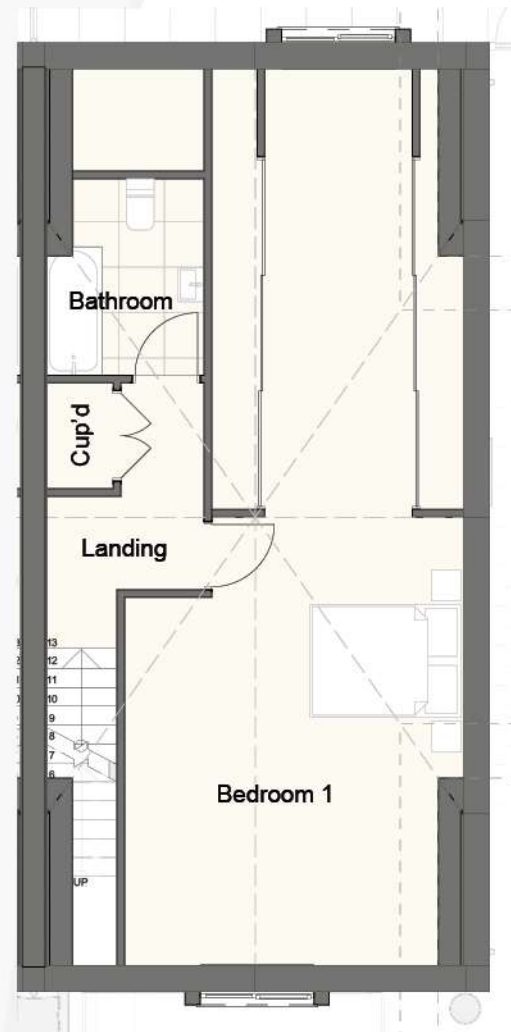
The Croft - Unit 16 - (House type 2)



Kitchen / Dining	26.1 m ²
Utility	4.4 m ²
Toilet	1.9 m ²
Cup'd	1.7 m ²
U/S Cup'd	1.6 m ²
Hallway	9.3 m ²
Lounge	16.9 m ²



Bedroom 2	21.4 m ²
En-suite (Bed 2)	4.4 m ²
Cup'd	2.4 m ²
Bedroom 3	16.9 m ²
En-suite (Bed 3)	4.4 m ²
Landing	11.1 m ²



Bathroom	5.1 m ²
Cup'd	1.3 m ²
Bedroom 1	43.3 m ²
Landing	4.9 m ²

Total Floor area's

Ground floor	66 m ²	710 sq ft
First floor	66 m ²	710 sq ft
Second floor	59.4 m ²	639 sq ft
Total (GIA)	191.4 m²	2060 sq ft

* Fitted wardrobes supplied in bedroom 1 only.
 ** Kitchens, wardrobes and general layouts are for guidance purposes only.

The Croft - Unit 17 - (Apartment type 5)



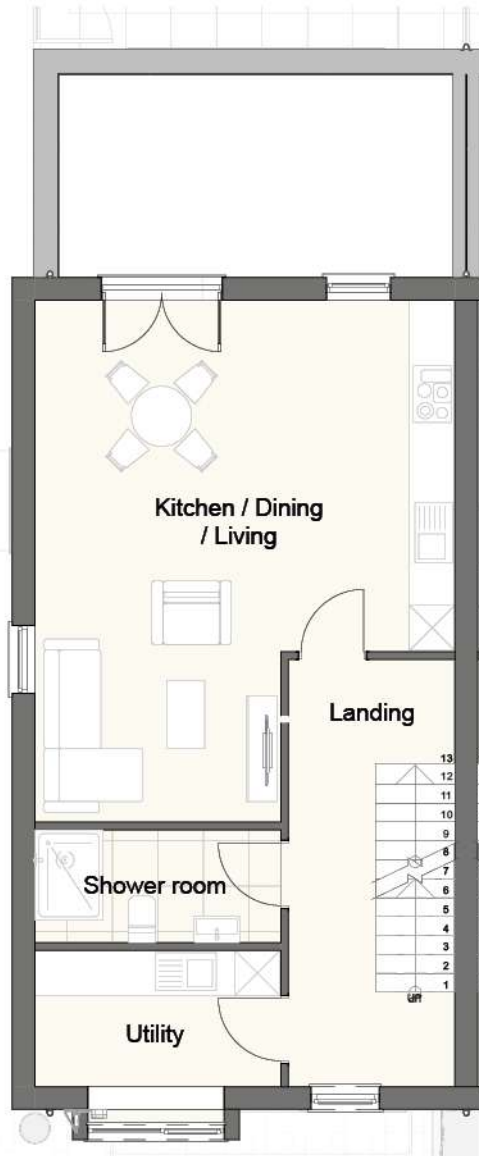
Kitchen / Dining / Living	32.9 m ²
Cup'd	1.3 m ²
Bathroom	4.3 m ²
Hallway	2.7 m ²
Bedroom 1	15 m ²
Bedroom 2	7.6 m ²

Total Floor area's

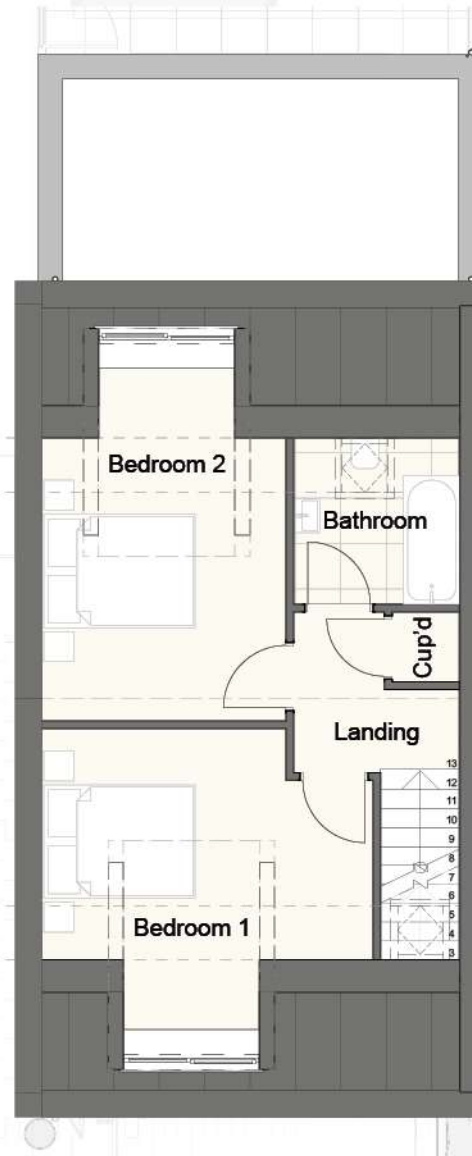
Ground floor	66 m ²
	710 sq ft
Total (GIA)	66 m ²
	710 sq ft

* Fitted wardrobes supplied in bedroom 1 only.
 ** Kitchens, wardrobes and general layouts are for guidance purposes only.

The Croft - Unit 18 - (Apartment type 6)



Kitchen / Dining / Living	33.1 m ²
Shower room	4.9 m ²
Utility	5.9 m ²
Landing	9.3 m ²



Bathroom	4.8 m ²
Cup'd	0.8 m ²
Bedroom 1	14.5 m ²
Bedroom 2	14 m ²
Landing	3.6 m ²

Total Floor area's

Ground floor	2.6 m ² 28 sq ft
First floor	57.7 m ² 621 sq ft
Second floor	42 m ² 452 sq ft
Total (GIA)	102.3 m² 1101 sq ft

* Fitted wardrobes supplied in bedroom 1 only.
 ** Kitchens, wardrobes and general layouts are for guidance purposes only.

The Croft - Unit 19 - (Apartment type 5)



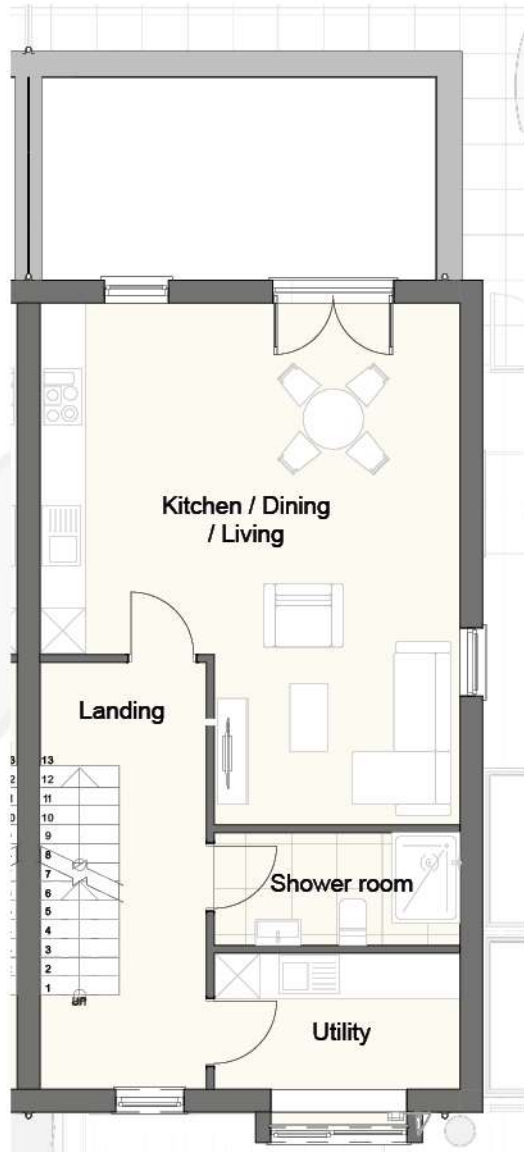
Kitchen / Dining / Living	32.9 m ²
Cup'd	1.3 m ²
Bathroom	4.3 m ²
Hallway	2.7 m ²
Bedroom 1	15 m ²
Bedroom 2	7.6 m ²

Total Floor area's

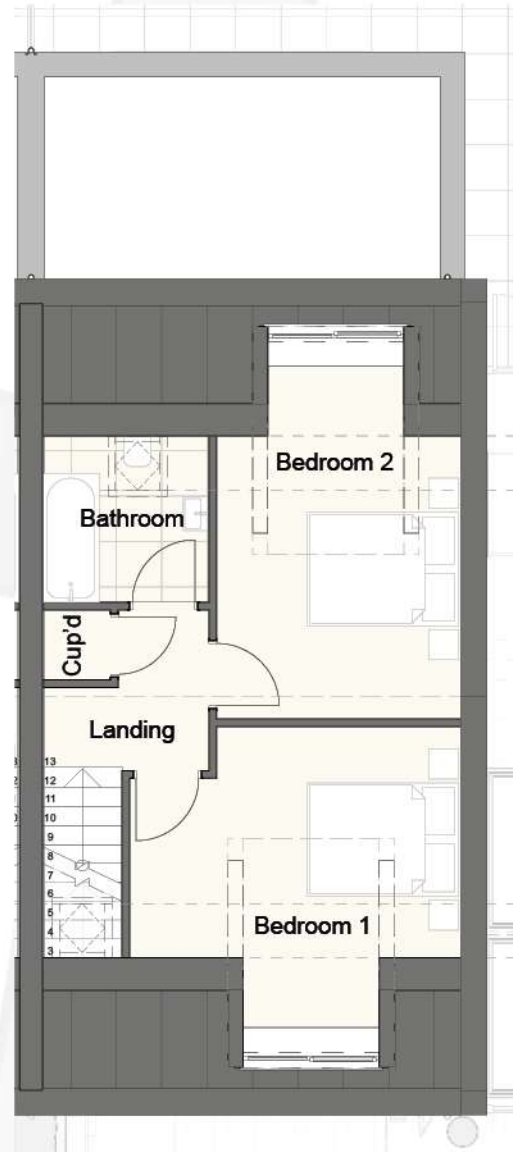
Ground floor	66 m ²
	710 sq ft
Total (GIA)	66 m ²
	710 sq ft

* Fitted wardrobes supplied in bedroom 1 only.
** Kitchens, wardrobes and general layouts are for guidance purposes only.

The Croft - Unit 20 - (Apartment type 6)



Kitchen / Dining / Living	33.1 m ²
Shower room	4.9 m ²
Utility	5.9 m ²
Landing	9.3 m ²



Bathroom	4.8 m ²
Cup'd	0.8 m ²
Bedroom 1	14.5 m ²
Bedroom 2	14 m ²
Landing	3.6 m ²

Total Floor area's

Ground floor	2.6 m ² 28 sq ft
First floor	57.7 m ² 621 sq ft
Second floor	42 m ² 452 sq ft
Total (GIA)	102.3 m² 1101 sq ft

* Fitted wardrobes supplied in bedroom 1 only.
 ** Kitchens, wardrobes and general layouts are for guidance purposes only.

The Croft - Unit 21 - (Apartment type 5)



Kitchen / Dining / Living	32.9 m ²
Cup'd	1.3 m ²
Bathroom	4.3 m ²
Hallway	2.7 m ²
Bedroom 1	15 m ²
Bedroom 2	7.6 m ²

Total Floor area's

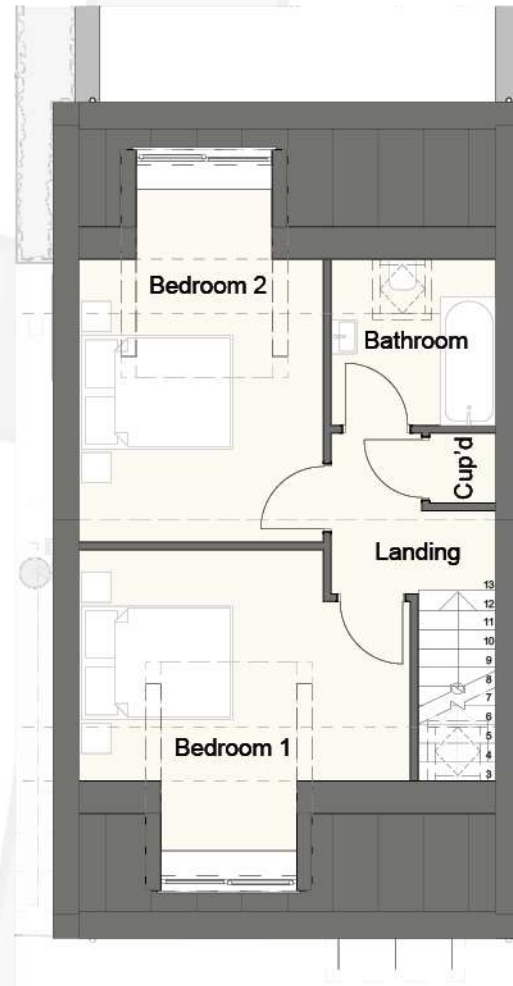
Ground floor	66 m ²
	710 sq ft
Total (GIA)	66 m ²
	710 sq ft

* Fitted wardrobes supplied in bedroom 1 only.
 ** Kitchens, wardrobes and general layouts are for guidance purposes only.

The Croft - Unit 22 - (Apartment type 6)



Kitchen / Dining / Living	33.1 m ²
Shower room	4.9 m ²
Utility	5.9 m ²
Landing	9.3 m ²



Bathroom	4.8 m ²
Cup'd	0.8 m ²
Bedroom 1	14.5 m ²
Bedroom 2	14 m ²
Landing	3.6 m ²

Total Floor area's

Ground floor	2.6 m ² 28 sq ft
First floor	57.7 m ² 621 sq ft
Second floor	42 m ² 452 sq ft
Total (GIA)	102.3 m ² 1101 sq ft

* Fitted wardrobes supplied in bedroom 1 only.
 ** Kitchens, wardrobes and general layouts are for guidance purposes only.

The Croft - Unit 23 - (Apartment type 7)



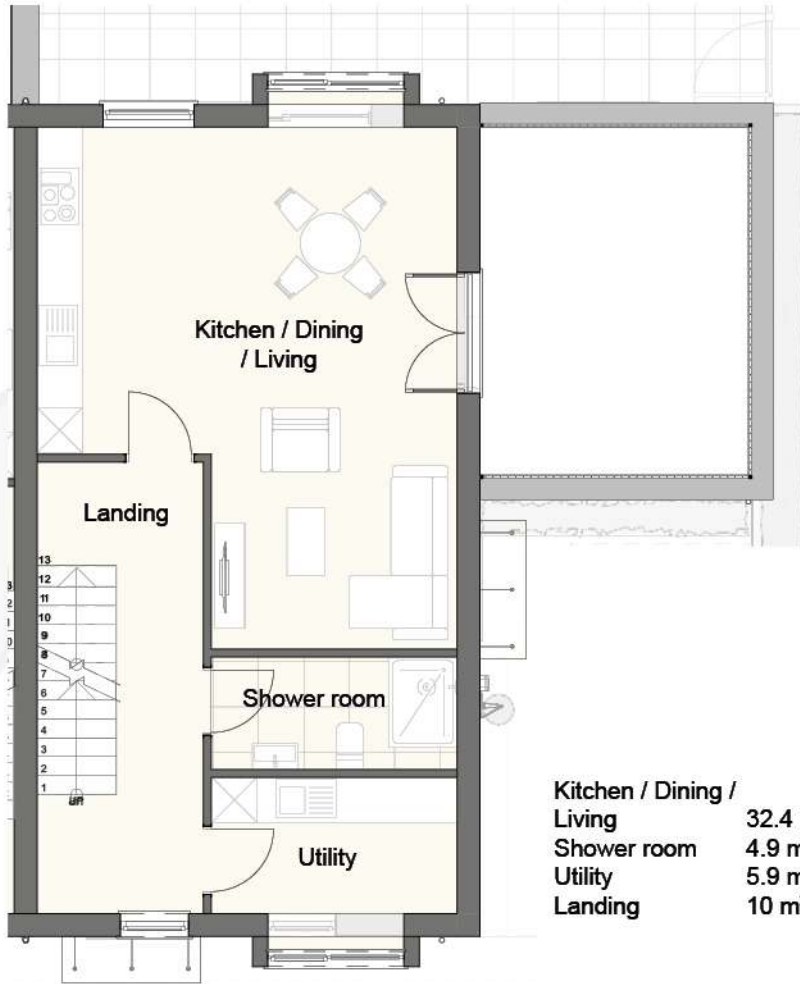
Total Floor area's

Ground floor	66.9 m ² 720 sq ft
Total (GIA)	66.9 m ² 720 sq ft

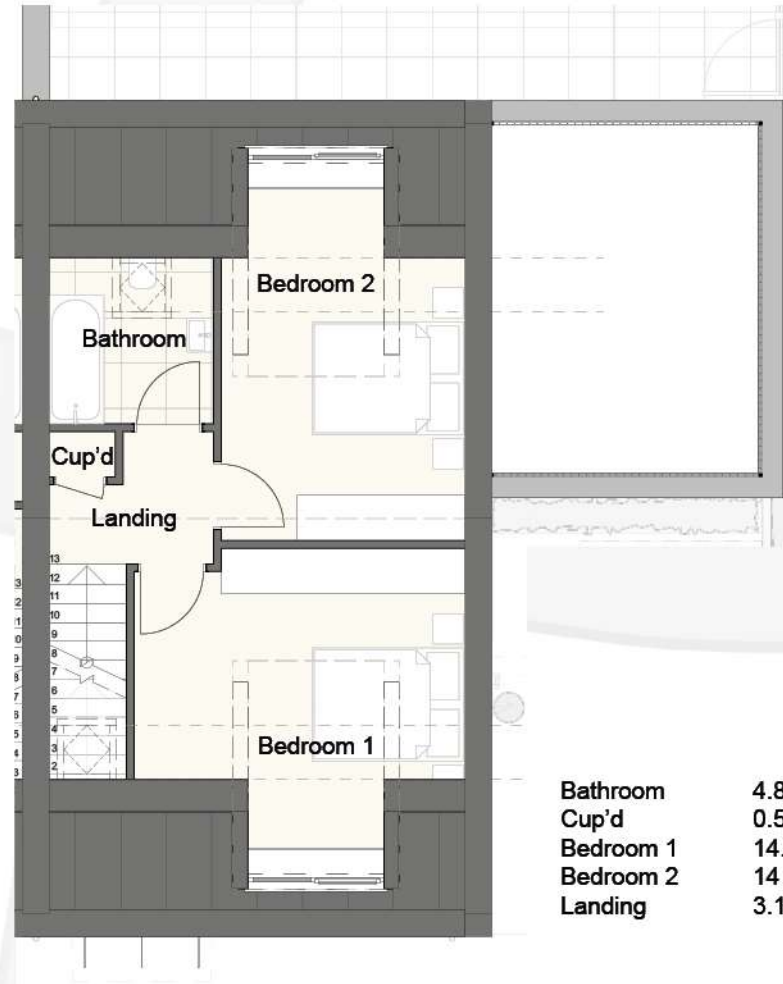
* Fitted wardrobes supplied in bedroom 1 only.
 ** Kitchens, wardrobes and general layouts are for guidance purposes only.

Kitchen / Dining / Living	29.1 m ²
Cup'd	1.4 m ²
Bathroom	4 m ²
Hallway	3.8 m ²
Bedroom 1	13.9 m ²
En-suite	3 m ²
Bedroom 2	9.7 m ²

The Croft - Unit 24 - (Apartment type 8)



Kitchen / Dining / Living	32.4 m ²
Shower room	4.9 m ²
Utility	5.9 m ²
Landing	10 m ²



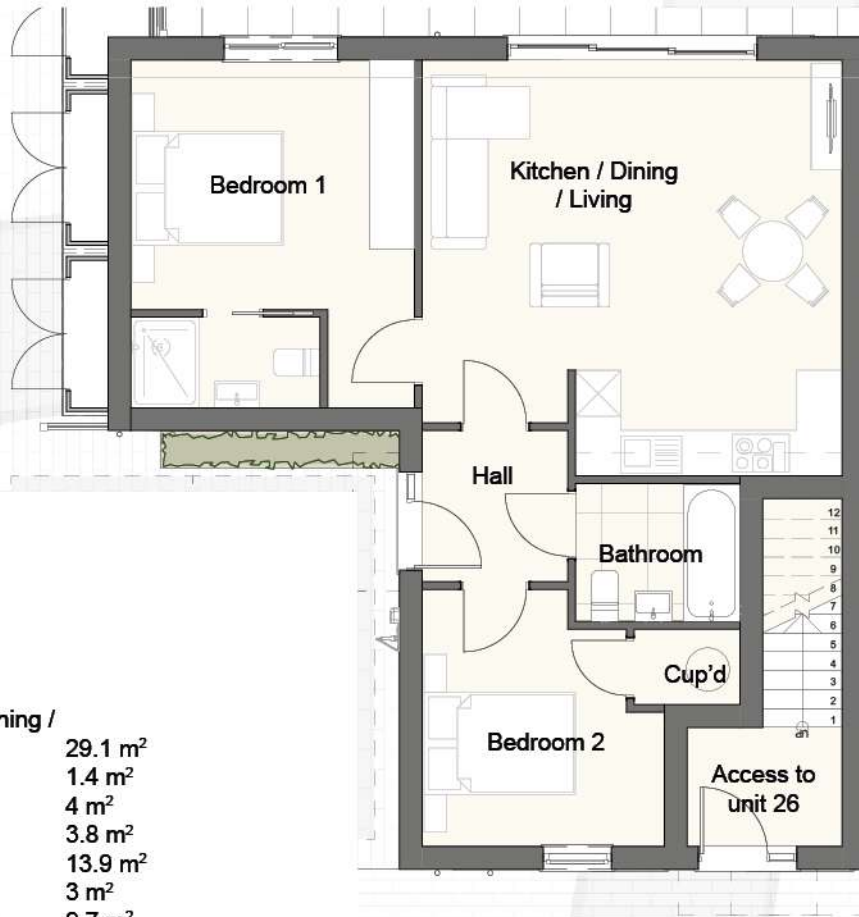
Bathroom	4.8 m ²
Cup'd	0.5 m ²
Bedroom 1	14.5 m ²
Bedroom 2	14 m ²
Landing	3.1 m ²

Total Floor area's

Ground floor	3.2 m ² 34 sq ft
First floor	57.7 m ² 621 sq ft
Second floor	42 m ² 452 sq ft
Total (GIA)	102.9 m ² 1108 sq ft

* Fitted wardrobes supplied in bedroom 1 only.
 ** Kitchens, wardrobes and general layouts are for guidance purposes only.

The Croft - Unit 25 - (Apartment type 7)



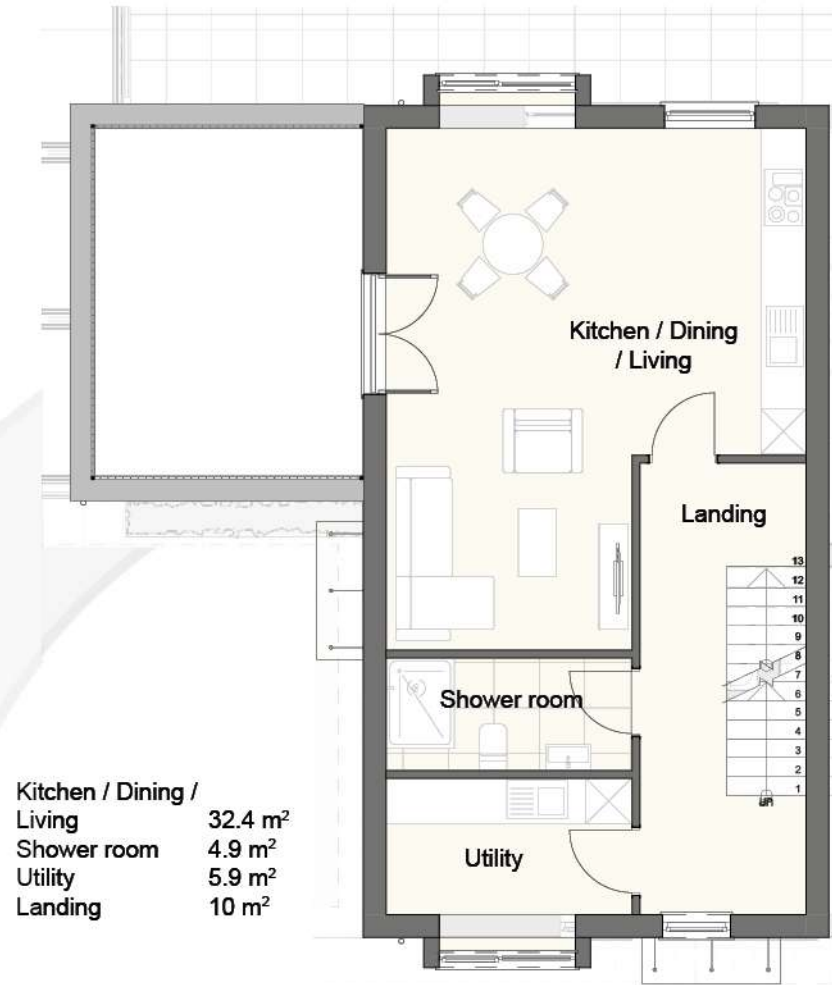
Kitchen / Dining / Living	29.1 m ²
Cup'd	1.4 m ²
Bathroom	4 m ²
Hallway	3.8 m ²
Bedroom 1	13.9 m ²
En-suite	3 m ²
Bedroom 2	9.7 m ²

Total Floor area's

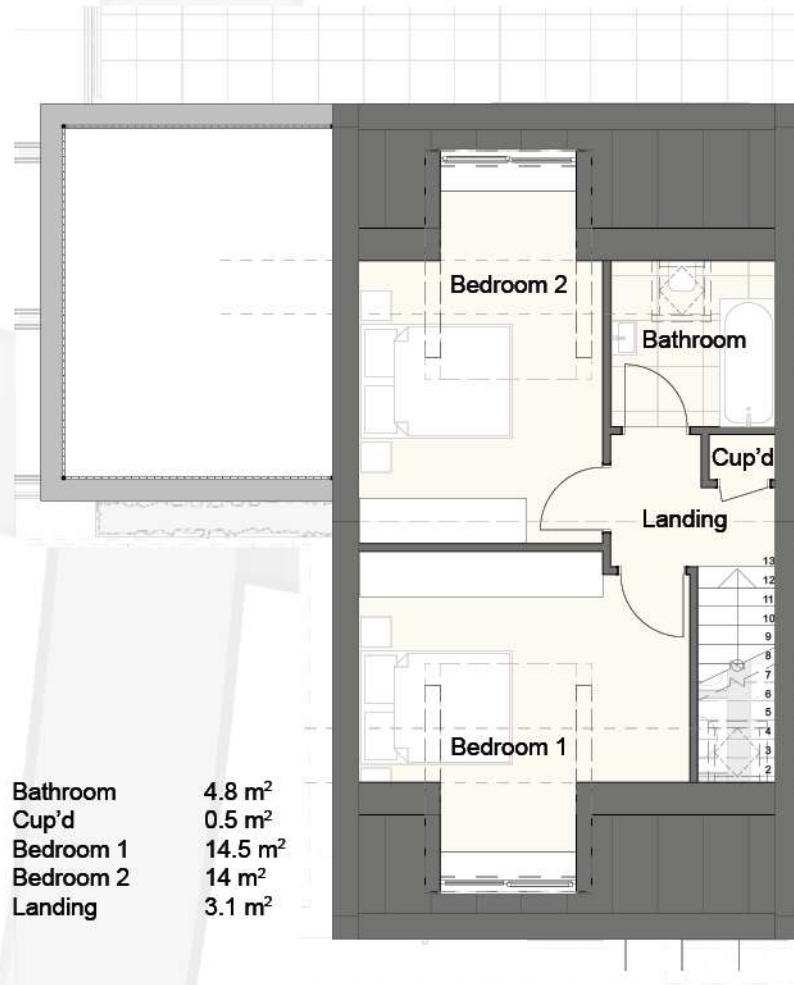
Ground floor	66.9 m ² 720 sq ft
Total (GIA)	66.9 m ² 720 sq ft

* Fitted wardrobes supplied in bedroom 1 only.
 ** Kitchens, wardrobes and general layouts are for guidance purposes only.

The Croft - Unit 26 - (Apartment type 8)



Kitchen / Dining / Living	32.4 m ²
Shower room	4.9 m ²
Utility	5.9 m ²
Landing	10 m ²



Bathroom	4.8 m ²
Cup'd	0.5 m ²
Bedroom 1	14.5 m ²
Bedroom 2	14 m ²
Landing	3.1 m ²

Total Floor area's

Ground floor	3.2 m ²	34 sq ft
First floor	57.7 m ²	621 sq ft
Second floor	42 m ²	452 sq ft
Total (GIA)	102.9 m²	1108 sq ft

* Fitted wardrobes supplied in bedroom 1 only.
 ** Kitchens, wardrobes and general layouts are for guidance purposes only.

The Croft - Images



The Croft - Images





**First Floor Unit 3, Les Caches Business Park, St Martins, Guernsey. GY4 6PH.
01481 238878 | sales@infinity.gg.**